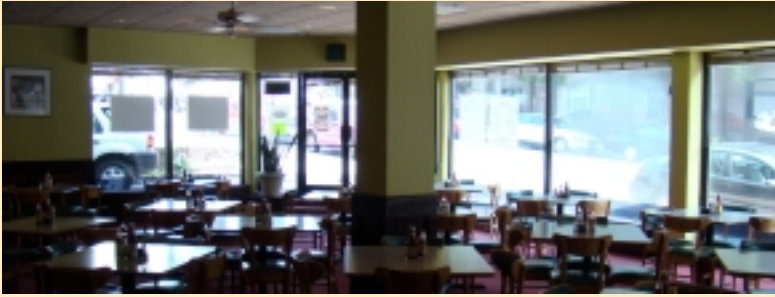
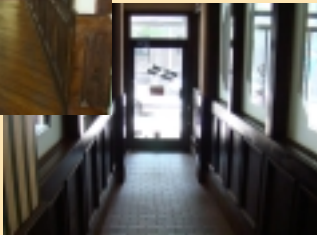
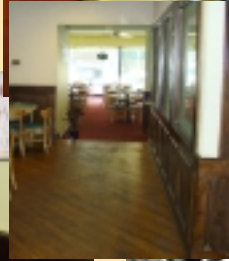


Southern Cafeteria



Nestled in a unique historic building, there are details such as wood paneling, multi levels and more than 40 feet of glass frontage on a busy Atlanta street.

Warm wood paneling in the dining room and wood plank floors in the bar area are great assets which need some TLC to restore the beauty of this diamond in the rough.



With more than 3500 sf, there is plenty of room to grow.



This spot is known by generations of folks who grew up in the area. Convenient to MARTA and walking distance from many office buildings,

Fresh ideas and quick service will bring people walking for blocks since many in offices have limited time for lunch today.



This well known Atlanta Landmark Cafe has been serving freshly made homestyle cooking for more than 50 years.



There are plenty of buildings nearby being renovated into condos, office space and retail shops.

Lots of foot traffic all day long make this a great place to have a breakfast & lunch place that will make money for a good owner operator.



The Premier Southern Homestyle Restaurant and Southern Cafe in the Atlanta area. Located in an historic building nestled between many high rise office and commercial buildings

Most equipment in this chef's kitchen has been updated

